

# STRAWBERRY SMART BENCHES

PRODUCT PORTFOLIO



# SMART BENCH MINI

the star of the smart city transformation

- ▶ Our best seller
- ▶ Blends perfectly with all kinds of urban environments
- ▶ Tender-friendly, loved by local governments and commercial clients



# SMART BENCH MINI

the point of distinction

- ▶ Ideal for cities budgets – affordable yet impactful solution to obtain the “smart city” badge.
- ▶ Elegant and modern design, made of super durable quality materials
- ▶ The best quality on the market – vandal proof, rust resistant, easy maintenance
- ▶ Cool branding options – city coat of arms or a brand logo are the most wanted solutions



# SMART BENCH MINI

## COMES WITH:



Environmental sensors  
(temperature, air pressure,  
humidity)



Powered by  
solar energy



WiFi + Access to Online  
Dashboard+ App +  
WiFi Landing page



Storing energy for days  
when there is no Sunshine  
and during night



USB charging ports,  
wireless charging



Branding surface



LED lights

## INSTALLATION:



30min



2 workers



drill

## MATERIALS:



Steel structure (2x primer, 2x paint),  
Acrylic glass

## DIMENSIONS (WxLxH) AND WEIGHT



450 x 1800 x 500mm



100 kg

## MAINTENANCE



Easy, only cleaning

## WARRANTY



15 months warranty, for more info please  
look at our Warranty card

## LEAD TIME



Delivery time is 90 days after receiving  
advance payment of 65%

\*Standard colour is grey RAL (7016).

\*Other colours are also available, some might be  
charged additionally (depending on the choice  
of colour).





## SSB1 – the first Smart Bench

---

- ▶ Internationally recognized unique design – tough steel and wide seating made of fine wood
- ▶ High quality finish secures long life with minimum maintenance
- ▶ Wide variety of colours and branding options – we accommodate to your vision

- ▶ Innovates companies CSR and ESG agenda in an impactful and affordable way
- ▶ Great project for local governments pushing for green smart initiatives
- ▶ New way of brand advertising: OOH + digital marketing







# SMART BENCH SSB1

2476 x 845 x 2802mm

## COMES WITH:



Environmental sensors  
(temperature, humidity,  
air pressure, CO2 and noise)



Powered by  
solar energy



WiFi + Access to Online  
Dashboard+ App +  
WiFi Landing page



Storing energy for days  
when there is no Sunshine  
and during night



USB charging ports,  
wireless charging



Branding surface

## INSTALLATION:



2h



4-5 workers



forklift  
or hiab truck

## MATERIALS:



Steel structure (2x primer, 2x paint),  
pine + iroko wood seating  
(1x primer + 2x final paint)

## DIMENSIONS (WxLxH) AND WEIGHT



845 x 2476 x 2862mm



600 kg

## MAINTENANCE



Cleaning, coating of wooden parts

## WARRANTY



15 months warranty, for more info please  
look at our Warranty card

## LEAD TIME



Delivery time is 90 days after receiving  
advance payment of 65%

\*Standard colour is grey RAL (7016).

\*Other colours are also available, some might be  
charged additionally (depending on the choice  
of colour).



## SSB2

the champion among Smart  
Bench branding

- ▶ Upper tier solar furniture for brands committed to innovative advertising, sustainable principles and high standards in brand presentation





## **SMART BENCH model 2: SSB2** the solar fueled advertising

---

- ▶ Exceptional quality and design: steel + iroko wood, attracts everyone's attention
- ▶ Best suitable for high visibility OOH branding
- ▶ Compliments every environment - from parks to super urban areas



# SMART BENCH SSB2

## COMES WITH:



Environmental sensors  
(temperature, humidity,  
air pressure, CO2 and noise)



Powered by  
solar energy



WiFi + Access to Online  
Dashboard+ App +  
WiFi Landing page



Storing energy for days  
when there is no Sunshine  
and during night

USB charging ports,  
wireless charging

Branding surface



2476 x 845 x 2562mm

## INSTALLATION:



2+h



3 workers



forklift or  
hiab truck

## MATERIALS:



Steel structure (2x primer, 2x paint),  
iroko wood seating  
(1x primer + 2x final paint)

## DIMENSIONS (WxLxH) AND WEIGHT



730 x 1910 x 2560mm



500 kg

## MAINTENANCE



Cleaning, coating of wooden parts

## WARRANTY



15 months warranty, for more info please  
look at our Warranty card

## LEAD TIME



Delivery time is 90 days after receiving  
advance payment of 65%

\*Standard colour is grey RAL (7016).

\*Other colours are also available, some might be  
charged additionally (depending on the choice  
of colour).



# SUN SEAT

Makes it all easy!

---

- ▶ Sun Seat is the newest addition to Strawberry smart solar street furniture portfolio. Super adaptable, more affordable, and highly customizable — this is actually a whole range of smart solar products.





## SUN SEAT Basic model

---

- ▶ It is highly customizable and the most affordable option in the smart solar seating niche. Sun Seat can be installed on different flat surfaces and be used as a smart solar seat with wireless charging slots.

# SUN SEAT Basic

## COMES WITH:



Wireless Chargers



Powered by solar energy



Li-ion Battery  
Storing energy for days when there is no Sunshine and during night

## ADDITIONAL FEATURES:



WiFi + Access to Online Dashboard + App + WiFi Landing page



USB ports



Environmental sensors



Extra battery



LED lights



## INSTALLATION:



30min



2 workers



Allen key

## MATERIALS:



Powdercoated steel structure, Acrylic glass

## DIMENSIONS (WxLxH) AND WEIGHT



425 X 1700 X 55mm



32 kg

## MAINTENANCE



Easy, only cleaning

## WARRANTY



15 months warranty, for more info please look at our Warranty card

## LEAD TIME



Delivery time is 90 days after receiving advance payment of 65%

\*Standard colour is grey RAL (7016).

\*Other colours are also available, some might be charged additionally (depending on the choice of colour).





## SUN SEAT Classic model

---

- ▶ Sun Seat Classic can be enriched with backrest, armrest and an array of internal features. This allows for different options and high adaptability to any urban or green setting. Choose the colour of the bench and customize internal features per your needs.



# SUN SEAT Classic model 1

## COMES WITH:



Wireless Chargers



Powered by solar energy



Li-ion Battery  
Storing energy for days when there is no Sunshine and during night

## ADDITIONAL FEATURES:



WiFi + Access to Online Dashboard  
+ App + WiFi Landing page



USB ports



Environmental sensors



Extra battery



LED lights



## INSTALLATION:

30-60min



2 workers



Allen key

## MATERIALS:



Powdercoated steel structure, Acrylic glass

## DIMENSIONS (WxLxH) AND WEIGHT



565 X 1700 X 445mm



44 kg

## MAINTENANCE



Easy, only cleaning

## WARRANTY



15 months warranty, for more info please look at our Warranty card

## LEAD TIME



Delivery time is 90 days after receiving advance payment of 65%

\*Standard colour is grey RAL (7016).

\*Other colours are also available, some might be charged additionally (depending on the choice of colour).



# SUN SEAT Classic model 2

## COMES WITH:



Wireless Chargers



Powered by solar energy



Li-ion Battery  
Storing energy for days when there is no Sunshine and during night

## ADDITIONAL FEATURES:



WiFi + Access to Online Dashboard  
+ App + WiFi Landing page



USB ports



Environmental sensors



Extra battery



LED lights



## INSTALLATION:



30-60min



2 workers



Allen key

## MATERIALS:



Powdercoated steel structure, Acrylic glass

## DIMENSIONS (WxLxH) AND WEIGHT



565 X 1700 X 800mm



64 kg

## MAINTENANCE



Easy, only cleaning

## WARRANTY



15 months warranty, for more info please look at our Warranty card

## LEAD TIME



Delivery time is 90 days after receiving advance payment of 65%

\*Standard colour is grey RAL (7016).

\*Other colours are also available, some might be charged additionally (depending on the choice of colour).



# SUN SEAT Classic model 3

## COMES WITH:



Wireless Chargers



Powered by solar energy



Li-ion Battery  
Storing energy for days when there is no Sunshine and during night

## ADDITIONAL FEATURES:



WiFi + Access to Online Dashboard  
+ App + WiFi Landing page



USB ports



Environmental sensors



Extra battery



LED lights



## INSTALLATION:



30-60min



2 workers



Allen key

## MATERIALS:



Powdercoated steel structure, Acrylic glass

## DIMENSIONS (WxLxH) AND WEIGHT



585 X 1700 X 800mm



70 kg

## MAINTENANCE



Easy, only cleaning

## WARRANTY



15 months warranty, for more info please look at our Warranty card

## LEAD TIME



Delivery time is 90 days after receiving advance payment of 65%

\*Standard colour is grey RAL (7016).

\*Other colours are also available, some might be charged additionally (depending on the choice of colour).





## SUN SEAT Urban model

---

- ▶ URBAN SUN SEAT consists of solar panel supported by thick leg panels on each side. Legs are made of steel and powdercoated.

# SUN SEAT Urban

## COMES WITH:



Wireless Chargers



Powered by solar energy



Li-ion Battery  
Storing energy for days when there is no Sunshine and during night

## ADDITIONAL FEATURES:



WiFi + Access to Online Dashboard + App + WiFi Landing page



USB ports



Environmental sensors



Extra battery



LED lights



Branding surface



\*Standard colour is grey RAL (7016).

\*Other colours are also available, some might be charged additionally (depending on the choice of colour).

## INSTALLATION:

30-60min

2 workers

Allen key

## MATERIALS:



Powdercoated steel structure, Acrylic glass

## DIMENSIONS (WxLxH) AND WEIGHT



425 X 1700 X 445mm



52 kg

## MAINTENANCE



Easy, only cleaning

## WARRANTY



15 months warranty, for more info please look at our Warranty card

## LEAD TIME



Delivery time is 90 days after receiving advance payment of 65%





# BENEFITS FOR CLIENTS

## REAL ESTATE



Improve offer for  
tenants & visitors  
Be Green

## CITIES



Smart City  
facelift  
Be Green

## BRANDS



CSR & OOH  
Communication  
channel

## UNIVERSITIES



Experience  
of students  
Be Green

## TELECOM & ENERGY COMPANIES



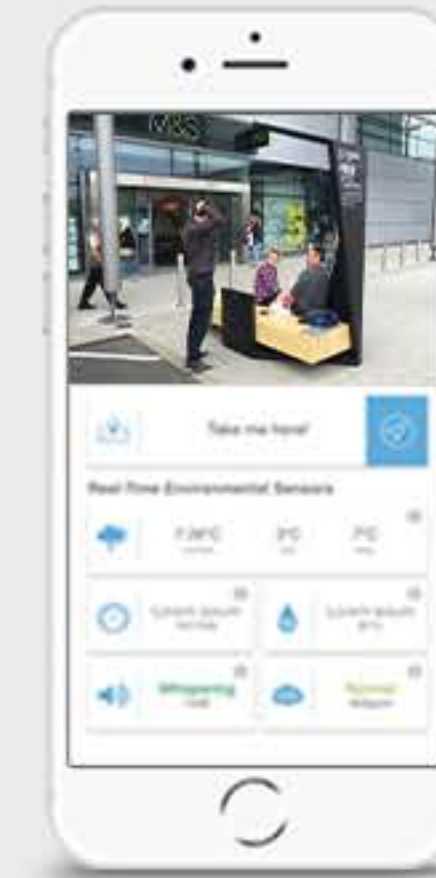
Improve  
connection  
Increase share  
of renewables



**WE LIKE TO MEASURE THE BENEFITS.  
WE WANT YOU TO BE ABLE TO DO IT TO.  
THAT'S WHAT SMART CITY IS ALL ABOUT.**

**EACH SMART BENCH MODEL COMES WITH WEB BASED ONLINE DASHBOARD WHERE YOU CAN TRACK ALL THE DATA FROM THE BENCH, PLUS A CUSTOMIZABLE LANDING PAGE THAT TRANSFERS THE OOH EXPERIENCE TO A DIGITAL ONE AND ANALYZE RESULTS IN CLIENT-FRIENDLY DOWNLOADABLE REPORTS.**

**STRAWBERRY APP IS AVAILABLE FOR BOTH IOS AND ANDROID, WITH WORLDWIDE MAP OF SMART BENCH LOCATIONS AND REAL TIME DATA FROM EACH BENCH!**



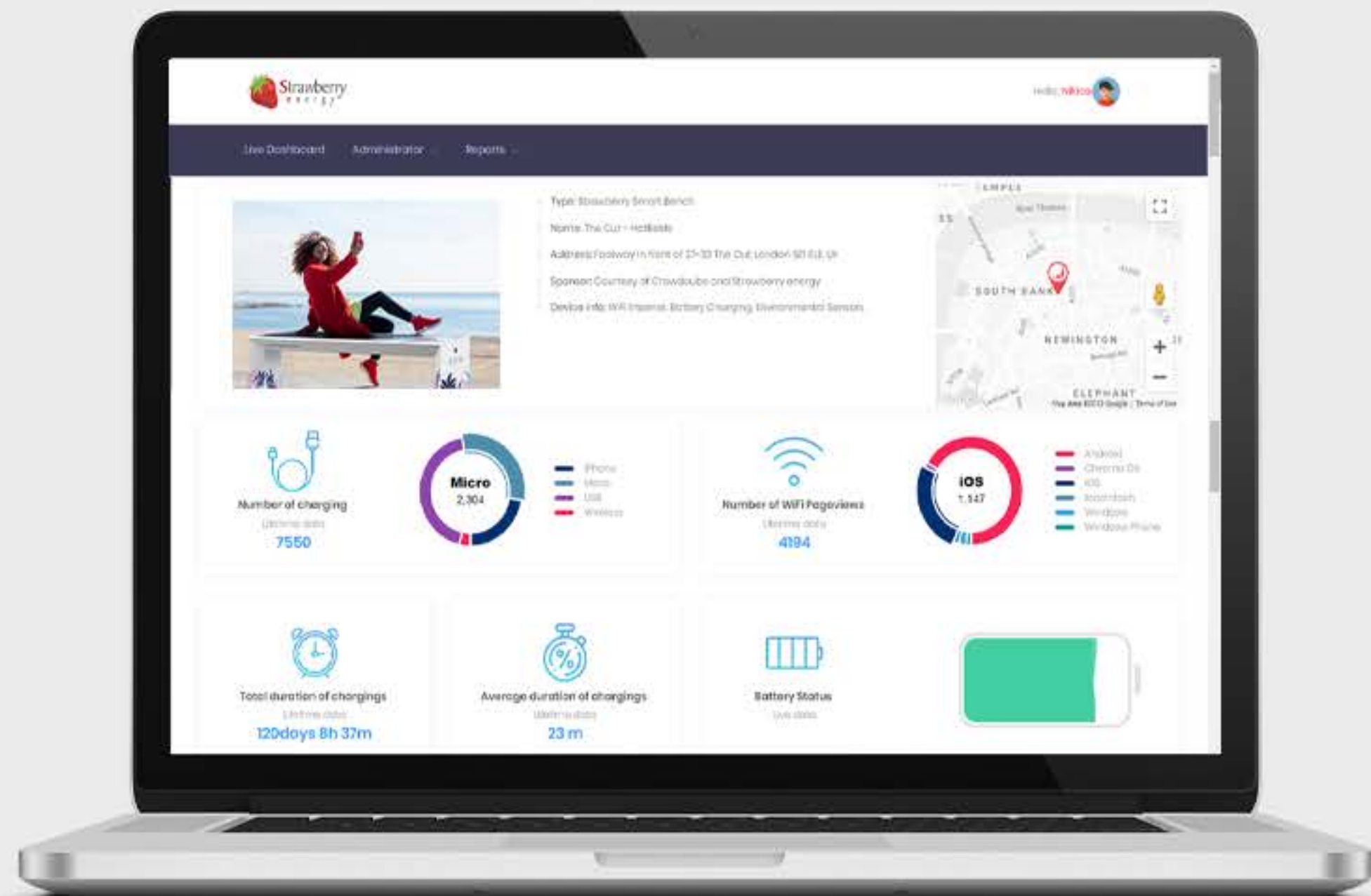
Branded mobile app  
(Android and iOS)



Branded WiFi  
login page



Web based application with an access  
to real time and historical usage data and  
data collected from environmental sensors



# WEB BASED DASHBOARD

- ▶ Access historical and real-time usage statistics of Smart Bench.
- ▶ Track the parameters of the environment around Smart Bench via built-in environmental sensors.
- ▶ Customize and download graphs and usage statistics reports for your business needs.
- ▶ Compare data of different Smart Benches throughout selected periods of time.
- ▶ Keep track of performance of each Smart Bench and maintain accordingly.



## BRANDED WIFI LANDING PAGE

---

- ▶ Content on WiFi Landing Page is distributed by the context-aware WiFi management platform.
- ▶ Use WiFi Landing Page to share relevant information or conduct a public consultation.
- ▶ Different promotional messages can be published, depending on various conditions around every Smart Bench (weather conditions, geolocation, time of the day, etc).
- ▶ Increase revenue through a new promotional channel for businesses in the area.

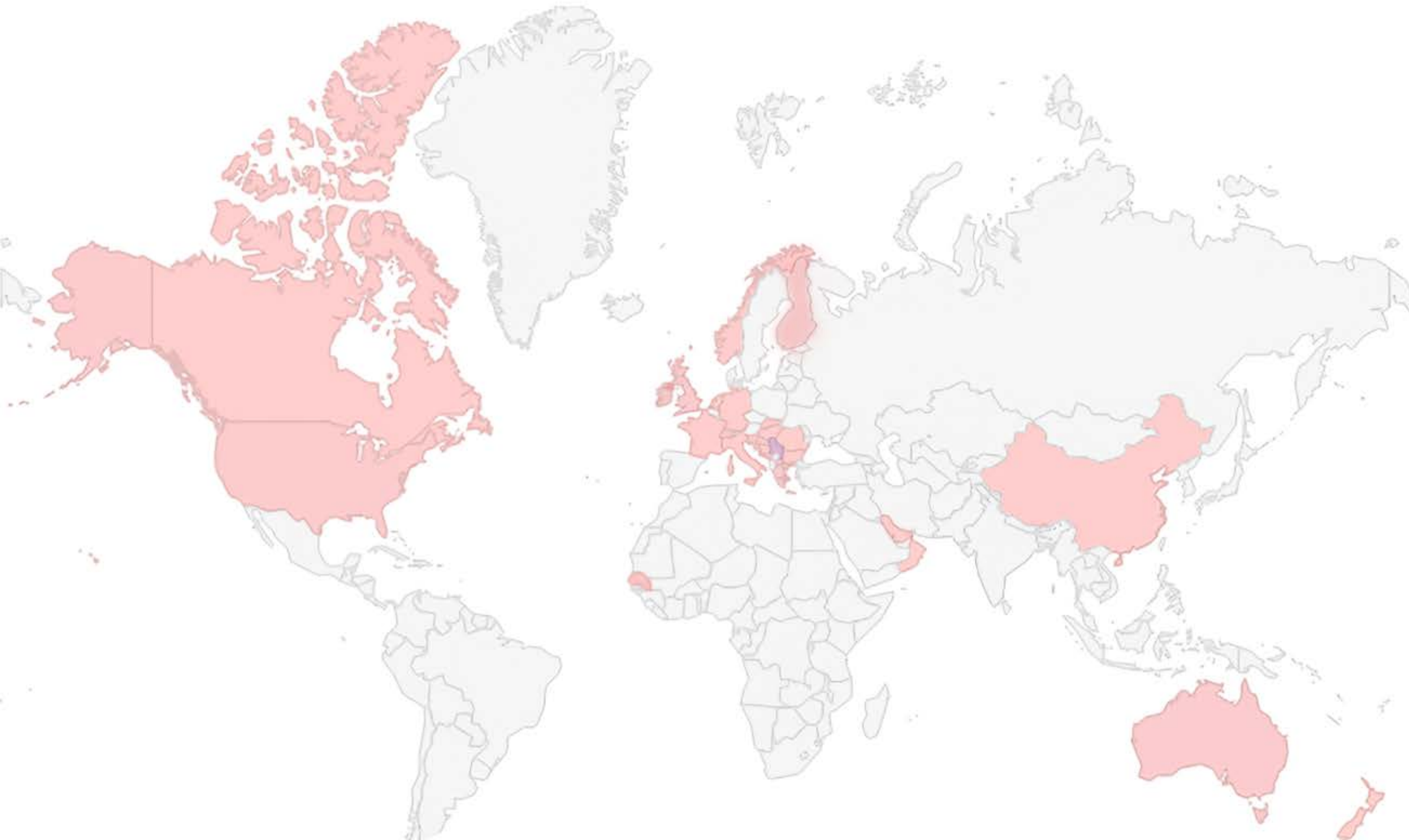
# WHERE ARE OUR DEVICES INSTALLED?

---

90+ CITIES

30+ COUNTRIES

5 CONTINENTS



Some of the cities where our Smart Benches are installed:

- LONDON (UK)
- PARIS, ARCHACHON (FRANCE)
- VENICE (ITALY)  
(during BIENALLE)
- ATHENS, TANAGRA (GREECE)
- MELBOURNE (AUSTRALIA)
- HONG KONG
- ZURICH, GENEVA, OBERDORF  
PREVERENGES SAVIESE  
TOLOCHENAZ (SWITZERLAND)
- BRATISLAVA (SLOVAKIA)
- DETROIT (US)
- VEJLE (DENMARK)
- HALDEN, RISOR (NORWAY)
- GRONINGEN (NETHERLANDS)
- ESSEN, GLADBECK,  
RECKLINGHAUSEN,  
RADEVORMWALD, HÜNXE  
(GERMANY)